

Congratulations on purchasing the Alert Delta Audio/Visual Extension Ringer.

The Extension Ringer allows you to set the ring and visual signals to suit your environment. The volume, and pitch of the audible signal can be adjusted while the in-built LED light provides a visual indication of incoming calls. This makes the Audio/Visual Extension Ringer ideal for a number of situations:

- Noisy areas
- Hearing-impaired users
- Providing a different ring in areas with several telephones
- Large areas such as workshops and warehouses
- Quiet areas where only a visual indication is required

The Extension Ringer can be wall mounted and connected to any analogue telephone line, analogue PABX extension and some Key systems as a central alarm or on a Two (2) wire analogue extension.



Note: Connection to Key systems as a central alarm must be performed by an ACA Licensed Installer.

Wall Mounting

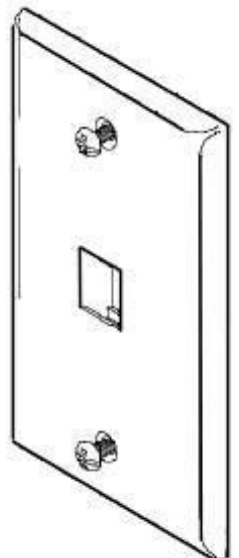
- Select suitable a wall location – Be careful to select a position that does not have electrical wiring behind the wall in the vicinity of the mounting holes. Ensure that there is a suitable power point handy for the AC Power Adaptor.
- Mark two positions 10cm apart vertically.
- Drill holes in marked positions.
- Insert suitable Mounting Screws. (not supplied)
- Place Extension Ringer over Mounting Screws and slide the unit downwards.

A standard wall phone mounting plate may also be used if available.

TELEPHONE LINE CONNECTION

To connect to an existing unused telephone socket:

- Insert one end of a Line Cord into the line socket on Extension ringer
- Insert the other end of the Line Cord directly into the wall socket or into Modular Adaptor.
- Plug the Modular Adaptor into the existing wall socket
- Connect the AC Power Adaptor



TO CONNECT THE POWER ADAPTOR:

Plug Power Adaptor cord connector into power socket at bottom of the AlertA Extension Ringer

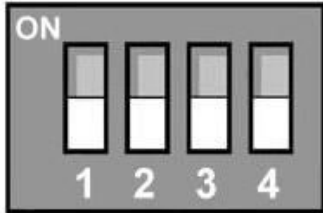
Clip the Power Adaptor cord under retaining clip on right hand side of Extension Ringer

Plug Power Adaptor into any convenient 240V AC power outlet

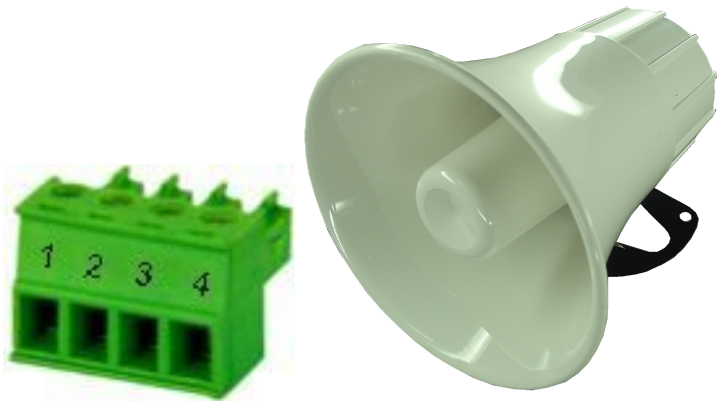
WARNING

The Alert Delta Extension Ringer is designed for indoor installation or for areas protected from the elements. The AC Adaptor must be installed indoors. Only use the supplied AC Power Adaptor with the product.

	SW1	SW2	SW3	SW4
ON	TONE ON	LED's ON	12V Output ON	12V Output Delay ON
OFF	TONE OFF	LED's OFF	12V Output OFF	12V Output Delay OFF



ž * > ~%d\c:fpZ\} }qbb\}, ...ž "" ° D1CY° 11BJ *G) B64,



FYa cj UVYgWYk 'hYfa jbu''''''9l HfbU', 'C\ a '<cfb'

J Qpqb½ž 6'46C*pp\X Qp× 1š,\}pQnz\Q \}~;r >φ~j 'ē φ''
r}ZOo Cb\ %d\j\ ~fm'

External Speaker connections are Pins 3 & 4.

